



EDSA-Boni MRT Station

A mixed use condominium development with residential and retail component.



- Situated on a 1.9-hectare prime lot at the corner of EDSA and Madison St. in Mandaluyong.
- 3 Residential towers offering Studio Units, 1-Bedroom Units and 2-Bedroom Units with a total inventory of 4,227 units.
- Two-level Light Mall that will feature the 4,000 square meter Savemore Market as anchor merchant (there will be about 10,000 square meters of leasable retail spaces to offer).
- 20,000 square meter shopping mall.

Centrally and conveniently located
at the heart of Metro Manila.



- Bounded by EDSA and Madison Street
- Offers the convenience of in-city living with its proximity to business districts, commercial centers, educational institutions, churches and hospitals



Makati Skyline



Ortigas Skyline



Bonifacio Skyline

LOCATION

RECREATIONAL DECK

8th Floor



Pasig

Ortigas Skyline
MADISON ST.

Makati & Bonifacio Global City
Skylines

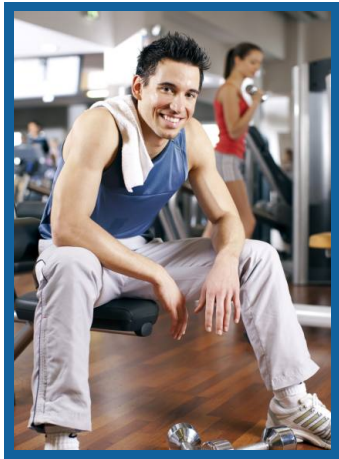


EDSA

- Swimming Pools **A**
- Function Rooms **B**
- Gym **C**

All information is intended to give a general overview of the project. The developer reserves the right to modify as it sees fit without prior notice.

Site Development Plan



- Grand Lobby
- Swimming pools
- Function rooms
- Fitness Center
- Jogging path
- Cabanas
- Landscaped Gardens



- 4,000 sqm Savemore Market
- Retail Area
- Cinemas
- Interesting Retail Mix



Light Mall at Light Residences

All information is intended to give a general overview of the project.
The developer reserves the right to modify as it sees fit without prior notice.

Promotes ease of living with the development's reliable support services.



- **Four (4) high speed elevators per tower**
 - ▣ **Capacity per elevator**
 - Passenger: **20 persons**
 - Freight: **21 persons**
- **24-hour security**
- **Automatic fire alarm system**
- **Centralized mail room system at the 8th Floor**
- **Centralized garbage collection and disposal system through Property Management.**
- **Back-up power**
 - ▣ **Commercial spaces: 100%**
 - ▣ **Residential units:**
 - **1 light receptacle for each bedroom**
 - **1 light receptacle for living room**
 - **1 outlet for refrigerator**
 - ▣ **Common areas: 100%**
- **Three (3) levels of above ground parking (Podium 3, 5 and 7)**
 - ▣ **Total no. of parking slots for residential: 922 slots**

THE PODIUM

Ground Floor (Commercial Area)



MADISON ST.



EDSA

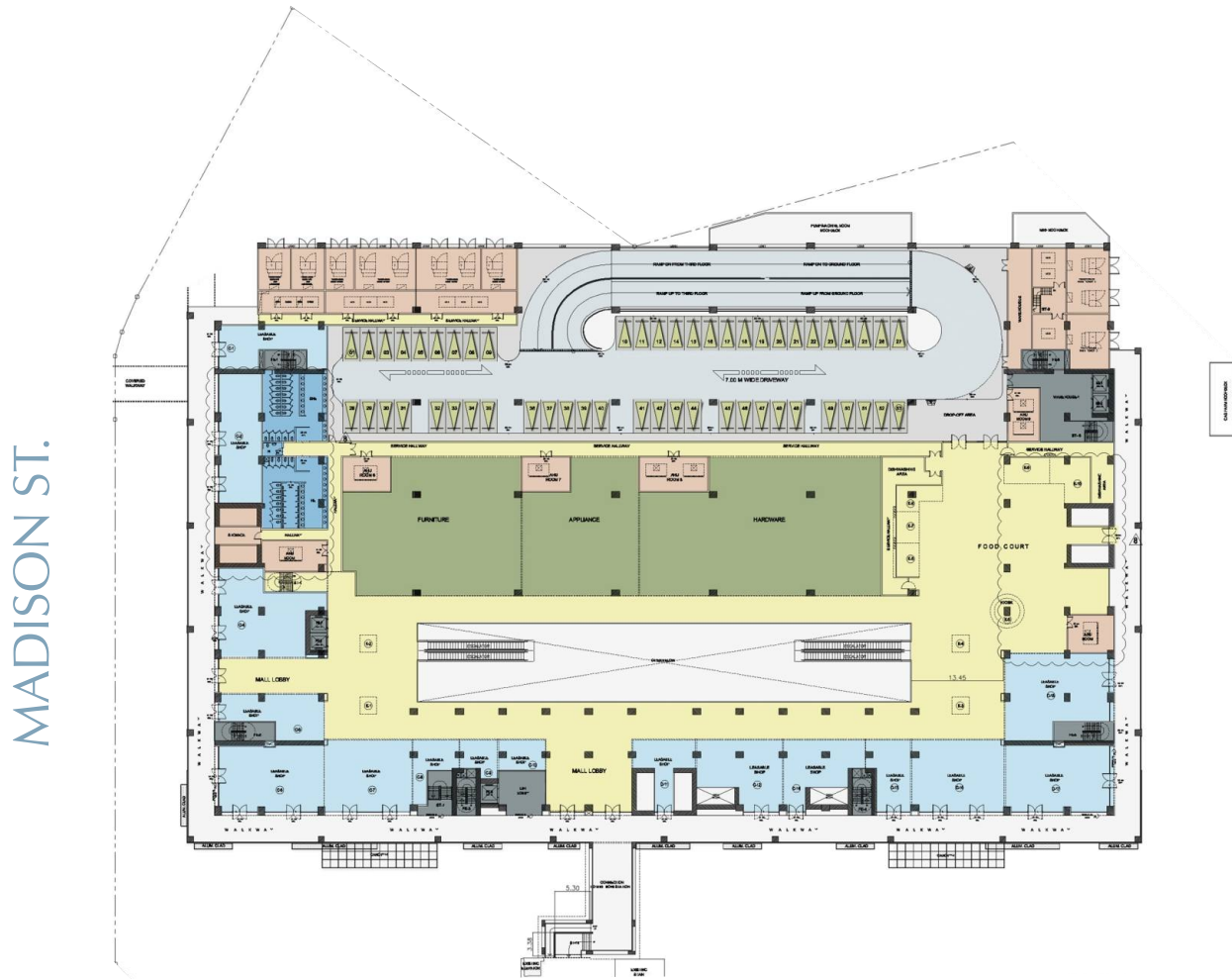


FLOOR PLAN

All information is intended to give a general overview of the project. The developer reserves the right to modify as it sees fit without prior notice.

THE PODIUM

2nd Floor (Commercial Area)



EDSA



FLOOR PLAN

All information is intended to give a general overview of the project. The developer reserves the right to modify as it sees fit without prior notice.

THE PODIUM

3rd Floor (Parking - 301 Car Slots)



MADISON ST.



EDSA



FLOOR PLAN

All information is intended to give a general overview of the project. The developer reserves the right to modify as it sees fit without prior notice.

THE PODIUM

5th Floor (Parking - 310 Car Slots)



MADISON ST.



EDSA



FLOOR PLAN

All information is intended to give a general overview of the project. The developer reserves the right to modify as it sees fit without prior notice.

THE PODIUM

7th Floor (Parking - 311 Car Slots)



MADISON ST.



EDSA



FLOOR PLAN

All information is intended to give a general overview of the project. The developer reserves the right to modify as it sees fit without prior notice.

TOWER 1

Unit Type	Total No. of Units	%
Studio	391	30%
1-Bedroom	422	32%
1-Bedroom with Balcony	388	30%
1-Bedroom Deluxe	35	3%
2-Bedroom	71	5%
TOTAL	1,307	100%

TOWER 1

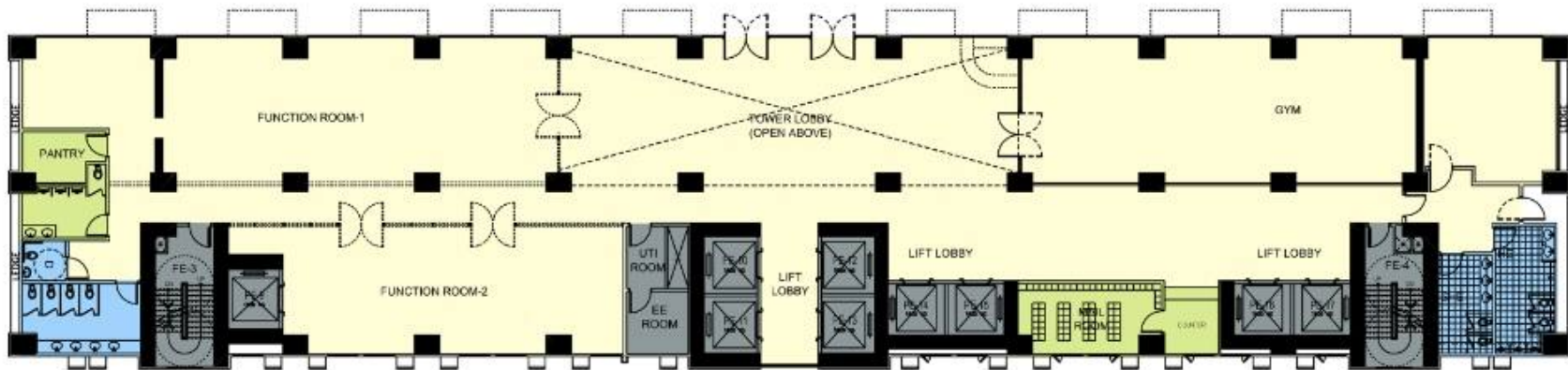
8th Floor - RECREATIONAL DECK



TOWER 2

TOWER 3

AMENITY AREA



EDSA



FLOOR PLAN

TOWER 1

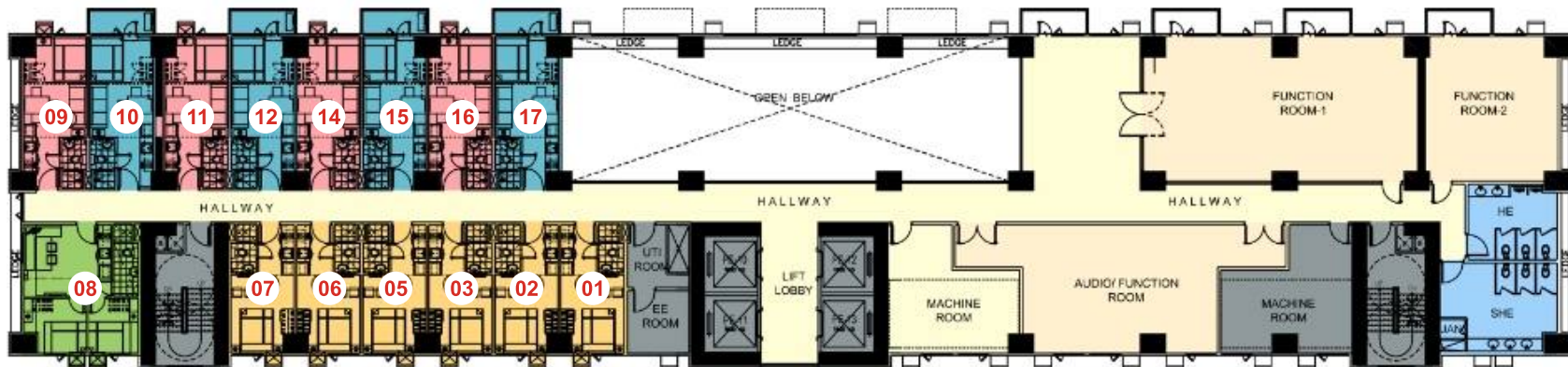
10th Floor



TOWER 2

TOWER 3

AMENITY AREA



EDSA



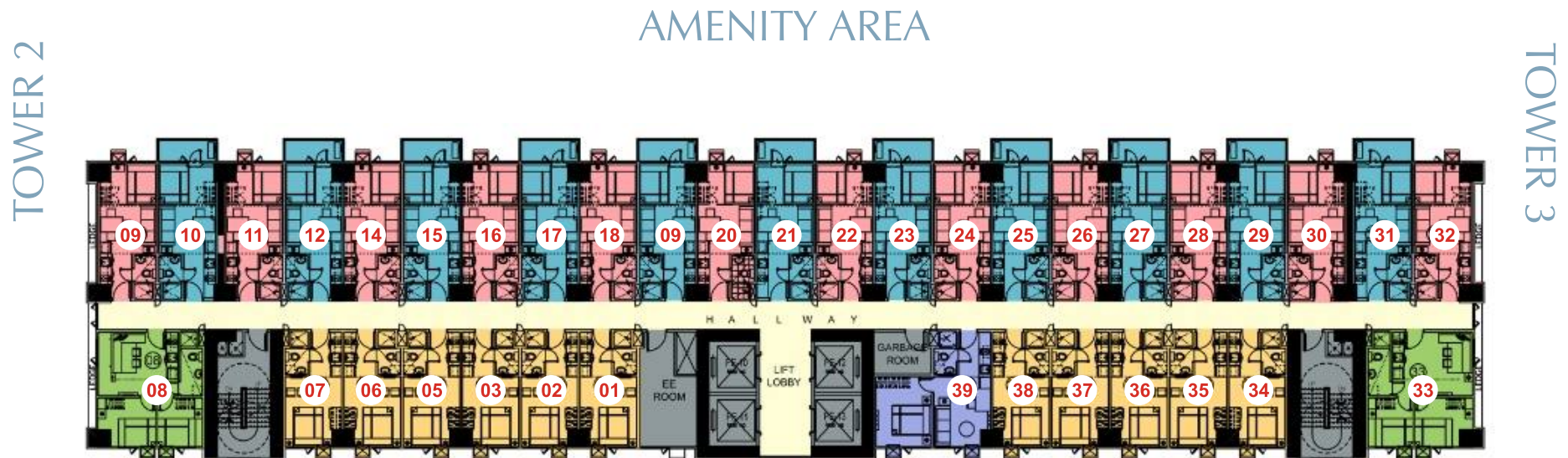
AVAILABLE UNITS:
Six (6) Studio Units
Eight (8) 1-Bedroom Units
One (1) 2-Bedroom Unit

FLOOR PLAN

All information is intended to give a general overview of the project. The developer reserves the right to modify as it sees fit without prior notice.

TOWER 1

11th to 49th Floor



EDSA



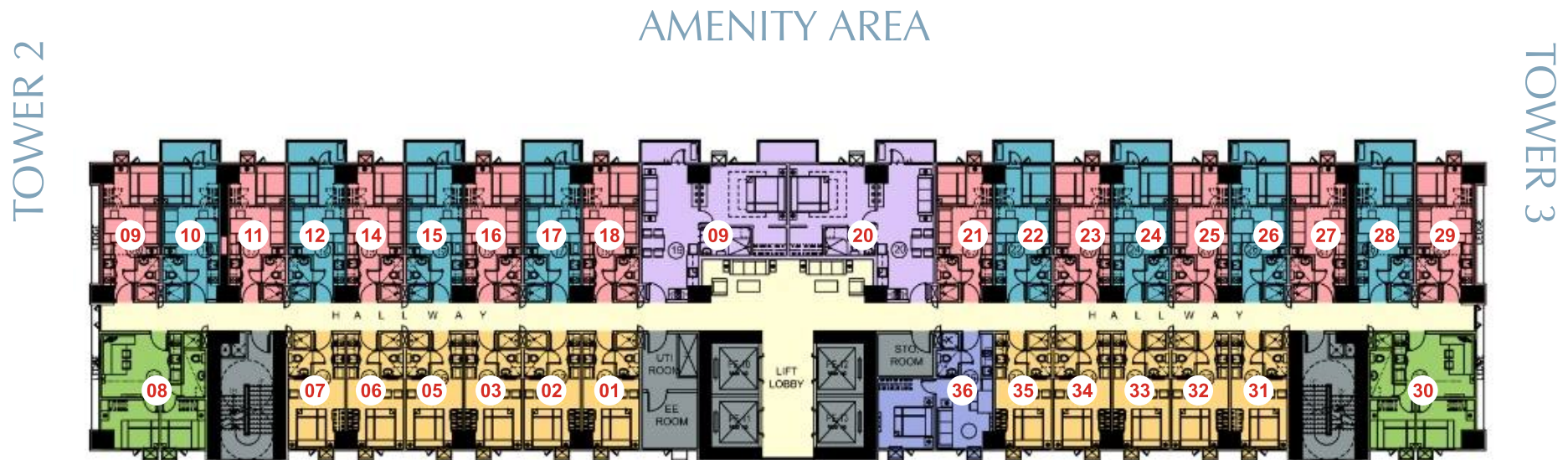
AVAILABLE UNITS PER FLOOR:
Eleven (11) Studio Units
Twenty-Three (23) 1-Bedroom Units
One (1) 1-Bedroom Deluxe Unit
Two (2) 2-Bedroom Units

TYPICAL FLOOR PLAN

All information is intended to give a general overview of the project. The developer reserves the right to modify as it sees fit without prior notice.

TOWER 1

Penthouse (50th Floor)



EDSA



- AVAILABLE UNITS:**
- Eleven (11) Studio Units
 - Eighteen (18) 1-Bedroom Units
 - One (1) 1-Bedroom Deluxe Unit
 - Two (2) 2-Bedroom Units
 - Two (2) 1-Bedroom Penthouse Units

All information is intended to give a general overview of the project. The developer reserves the right to modify as it sees fit without prior notice.

FLOOR PLAN

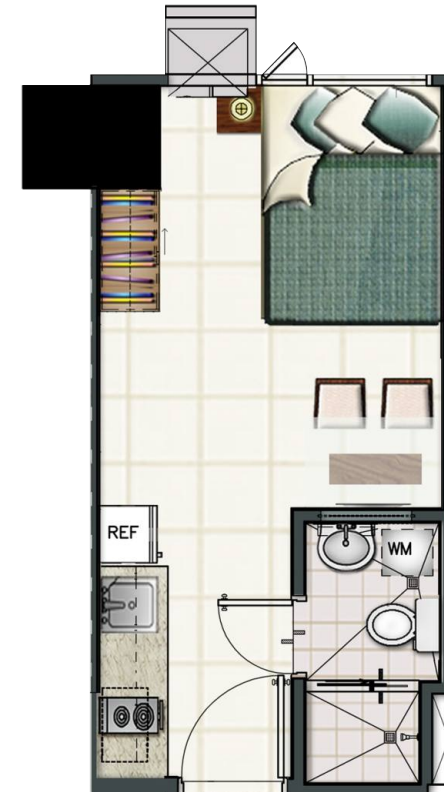
TOWER 1



1-Bedroom Unit with Balcony
27 sq.m.



1-Bedroom Unit
23 sq.m.



Studio Unit
20 sq.m.

TOWER 3

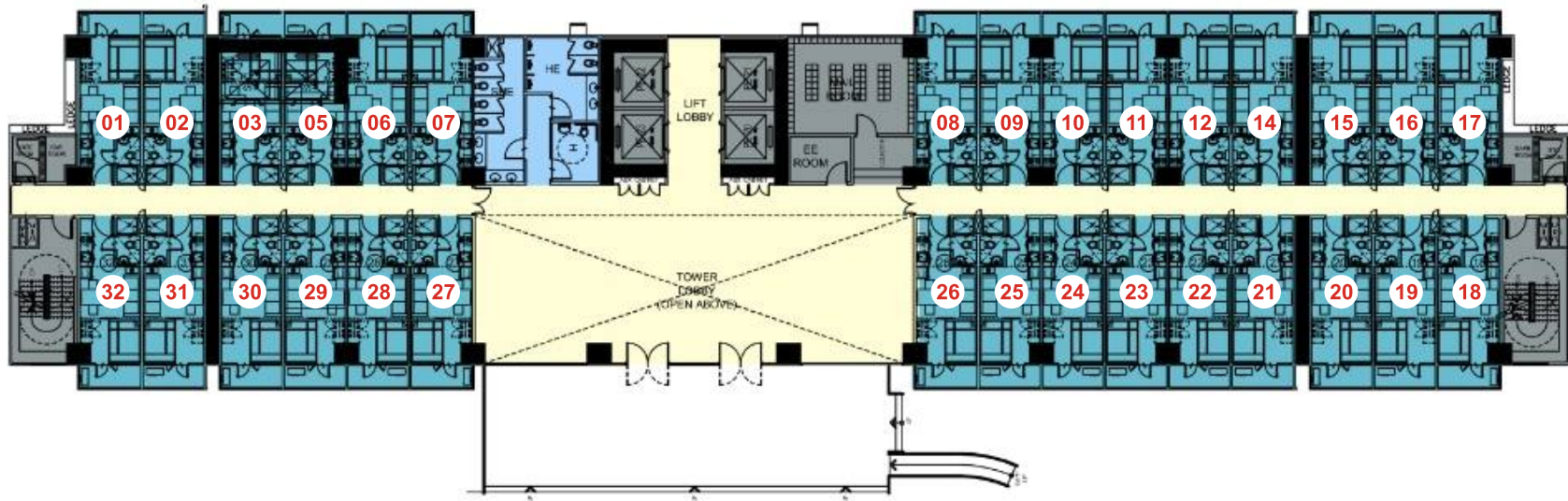
Unit Type	Total No. of Units	%
1-Bedroom	730	50%
1-Bedroom with Balcony	692	47%
2-Bedroom with Balcony	36	2%
1-Bedroom Suite at PH	2	1%
TOTAL	1,460	100%

TOWER 3

8th Floor



MAKATI SKYLINE



EDSA

AMENITY AREA



AVAILABLE UNITS:
Thirty (30) 1-Bedroom Units

FLOOR PLAN

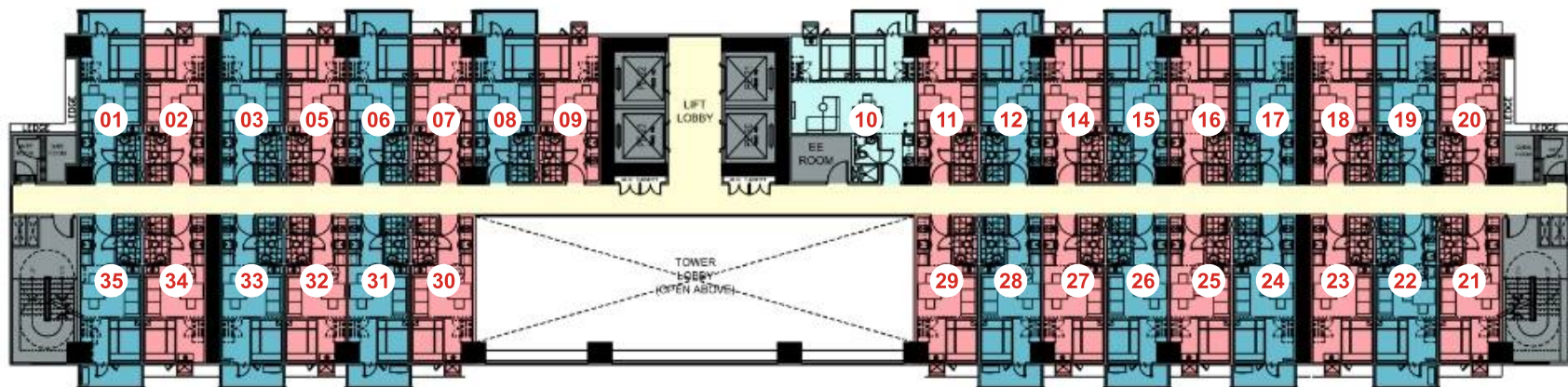
All information is intended to give a general overview of the project. The developer reserves the right to modify as it sees fit without prior notice.

TOWER 3

10th Floor



MAKATI SKYLINE



AMENITY AREA

AVAILABLE UNITS:
Thirty-Two (32) 1-Bedroom Units
One (1) 2-Bedroom Unit

TYPICAL FLOOR PLAN

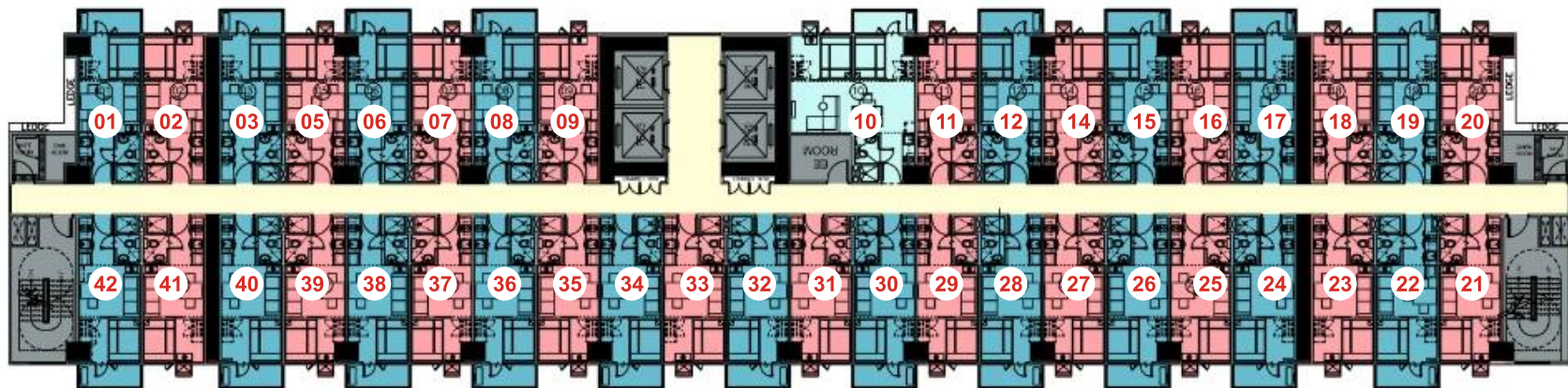
All information is intended to give a general overview of the project. The developer reserves the right to modify as it sees fit without prior notice.

TOWER 3

11th to 49th Floors



MAKATI SKYLINE



EDSA



AMENITY AREA

AVAILABLE UNITS:
Thirty-Nine (39) 1-Bedroom Units
One (1) 2-Bedroom Unit

FLOOR PLAN

All information is intended to give a general overview of the project. The developer reserves the right to modify as it sees fit without prior notice.

TOWER 3

Penthouse (50th Floor)



MAKATI SKYLINE



EDSA

AMENITY AREA

AVAILABLE UNITS:

Thirty-Three (33) 1-Bedroom Units

One (1) 2-Bedroom Unit

Two (2) 1-Bedroom Penthouse Units

All information is intended to give a general overview of the project. The developer reserves the right to modify as it sees fit without prior notice.

FLOOR PLAN

TOWER 3

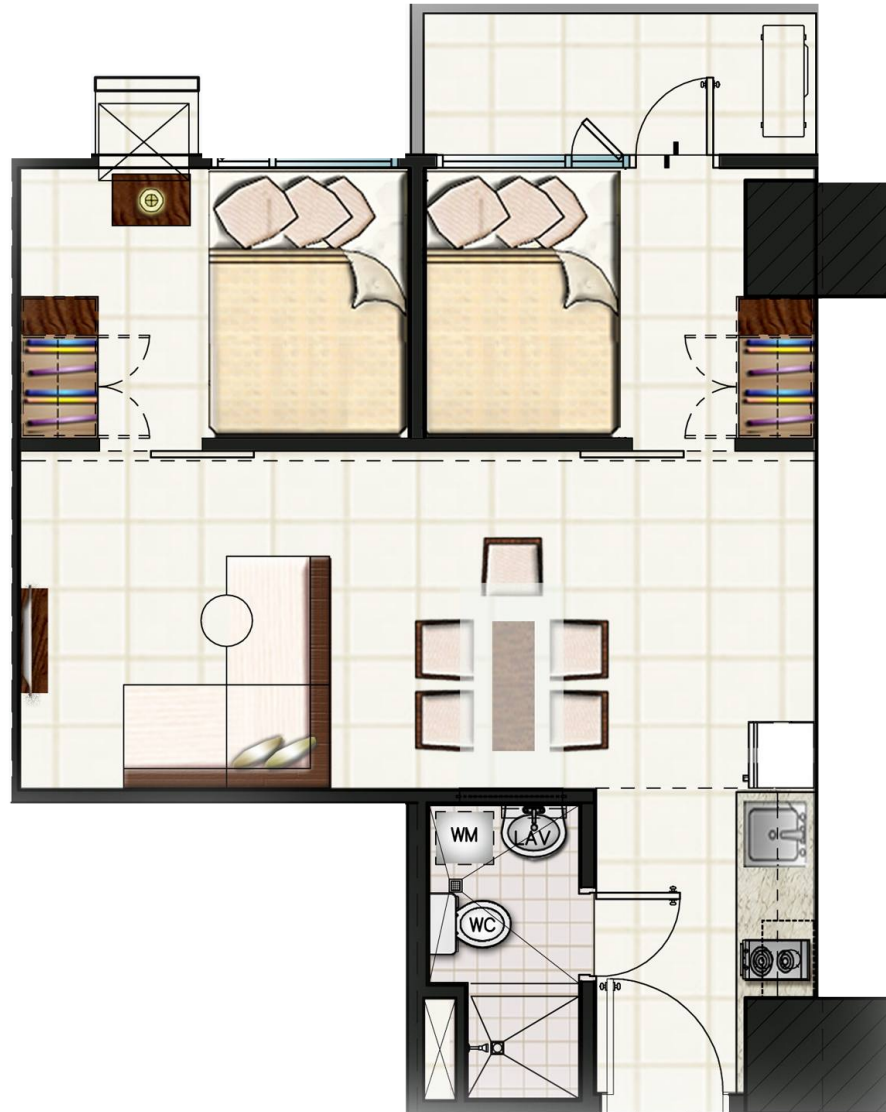


1-Bedroom Unit with Balcony
27 sq.m.



1-Bedroom Unit
23 sq.m.

TOWER 3



**2-Bedroom Unit
with Balcony
43 sq.m.**

UNIT FLOOR PLAN

All information is intended to give a general overview of the project.
The developer reserves the right to modify as it sees fit without prior notice.