



SMDC

CHEERFUL HOMES

MABALACAT CITY, PAMPANGA





THE SURE AND WISE CHOICE

Come home to SMDC Cheerful Homes, the sure and wise choice. Strategically located in Mabalacat, Pampanga, it has its very own commercial area with transportation hub for your convenience. Plus, get 24-hour security for the safety of your family.



Main Road, Artist's Perspective



LOCATION

SMDC Cheerful Homes has its own transport hub located within the community's commercial area, for the convenience of its residents. Plus, it's just a short ride away from various points of interests in Pampanga.


COMMERCIAL AREA

- SM City Clark - 9.4km
- City Mall DAU - 8.5km
- Marquee Mall - 9.8km

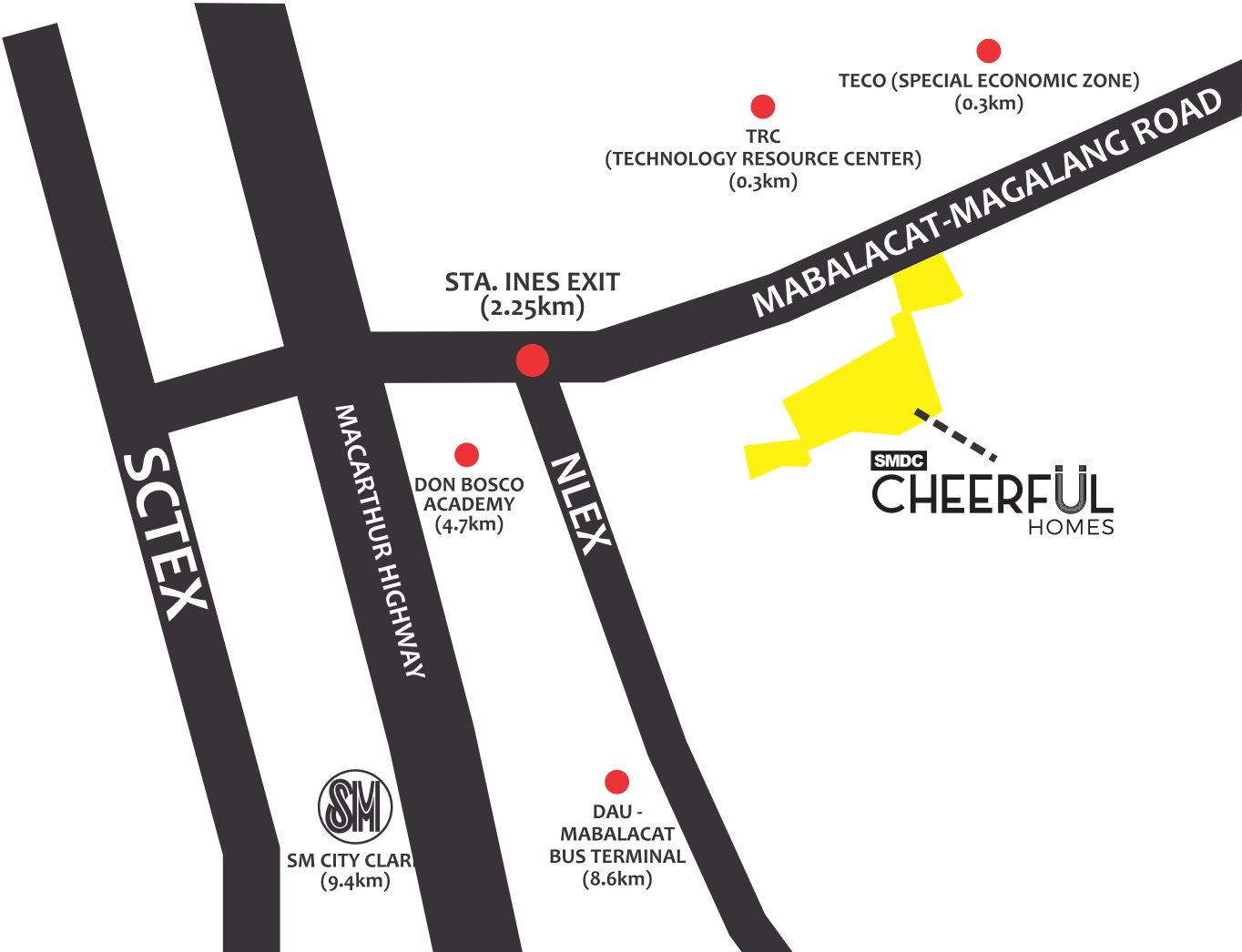
ECONOMIC ZONE

- TECO (Special Economic Zone) - 0.3km
- TRC (Technology Resource Center) - 0.4km
- Clark Freeport Zone - 9.2km

TRANSPORTATION HUB

- DAU-Mabalacat Bus Terminal - 8.6km
 - Bayanihan (ASTRO) Terminal - 10.7km
 - Clark International Airport - 8.9km
- 

VICINITY MAP



YOUR IDEAL COMMUNITY

SMDC's Cheerful Homes is a master-planned community with well-designed homes perfect for the modern Filipino family. And with over one hectare open space filled with a complete set of amenities, there's reason to be cheerful everyday.



Street View, Artist's Perspective

THE CLUBHOUSE COMPLEX



Clubhouse, Artist's Perspective

THE NATURE PARK

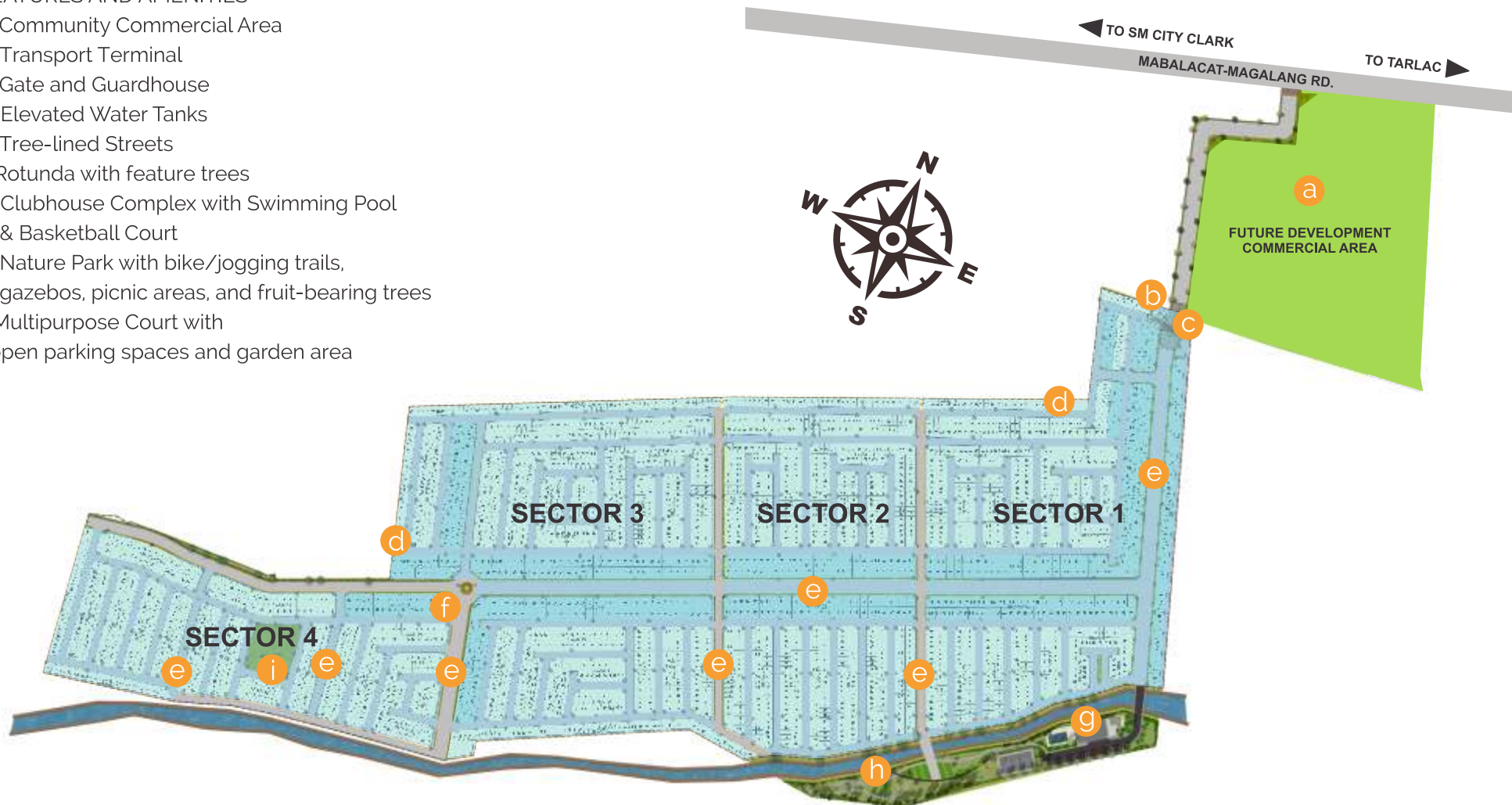


Nature Park, Artist's Perspective

SITE DEVELOPMENT PLAN

FEATURES AND AMENITIES

- a. Community Commercial Area
- b. Transport Terminal
- c. Gate and Guardhouse
- d. Elevated Water Tanks
- e. Tree-lined Streets
- f. Rotunda with feature trees
- g. Clubhouse Complex with Swimming Pool & Basketball Court
- h. Nature Park with bike/jogging trails, gazebos, picnic areas, and fruit-bearing trees
- i. Multipurpose Court with open parking spaces and garden area



YOUR FLEXIBLE HOME

A home that you can design on your own and maximize the use of every space. You can easily design your flexi home from a one bedroom to a three bedroom home.



Dressed Up Unit, Artist's Perspective



Dressed Up Unit, Artist's Perspective

FLEXI HOME A 32.50 SQM

This interior design for a 3 bedroom home allows new homeowners to utilize the flexible space (three bedrooms, living and dining area), enough room for families with children to grow.



Model Unit, Artist's Perspective



DELIVERABLE



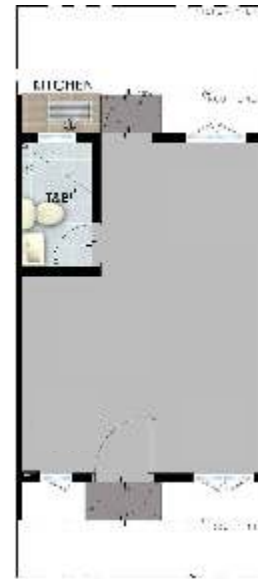
SUGGESTED LAYOUT

FLEXI HOME B UNIT 22 SQM

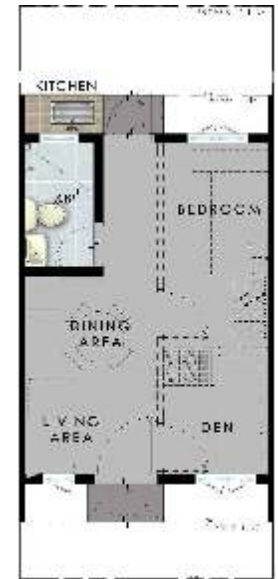
For young couples starting out their new adventures, this interior design inspiration makes full use of the available space, providing a bedroom, living and dining area, plus a den.



Model Unit, Artist's Perspective



DELIVERABLE



SUGGESTED LAYOUT



Every single day, SM touches the lives of millions of people through its stores, malls, banks, hotels and leisure facilities.

And now, Filipinos can live in style, comfort and convenience at SM Development Corporation (SMDC).

SMDC commits itself to provide access to luxurious urban living through vertical villages perfectly integrated with a commercial retail environment, giving its residents a truly cosmopolitan lifestyle.

SMDC developments are strategically situated in key areas across Metro Manila specifically the Central Business Districts of Mall of Asia Complex, Makati, Ortigas, Taguig, Quezon City, Pasay, Parañaque, Mandaluyong and Las Piñas.

HLURB LS No. 032601 | HLURB NTRFO-AA-2017/06-553
Brgys. Sta. Maria and Bundagul, Mabalacat City, Pampanga
Completion Date: November 2020 Land Development
Maximum Selling Price: 1.7M
Developer: SM Development Corporation